



Schoolnet's Assessment and Reporting Solution is your comprehensive solution to drive data-informed decisions to improve student learning

Our solution integrates the software, tools, and services that drive achievement for millions of K-12 students. With a single solution, Schoolnet provides educators with tools to support:

- Formative Assessment Creation, Administration, Delivery & Scoring
- Data Analysis, Reporting & Management
- Instructional Support
- Curriculum Management
- Student & Parent Access
- Student Profiles and Student Workspaces
- TestNav Integration for Online Test Delivery

Hundreds of districts use **Schoolnet's Assessment and Reporting Solution** to:

- Empower administrators to make informed decisions based on timely access to data
- Significantly enhance the efficiency and effectiveness of teachers
- Provide students with the information they need to set goals and participate in their education
- Engage parents in the everyday progress of their children
- Provide educators with data informed insights that make instruction more effective



Schoolnet taps the power of district data to drive individual student and educator performance

“The (Schoolnet) system has all the data in one place so you can see a longitudinal picture of where students are, not only from the teacher level, but from the school and district level.”

-Kimberly King, Superintendent of Knott County Schools

For more information about Schoolnet, please visit our website at www.schoolnet.com, or contact your District Assessment Director.

West: Leslie Wollman-Weekley, 714.721.3282
Email: leslie.wollman-weekley@pearson.com

East: Alex Schoenfeld, 609.240.9346
Email: alex.schoenfeld@pearson.com



Schoolnet's Assessment and Reporting: A comprehensive and unified platform that fully taps the power of data-driven education:

Formative Assessment

Design and deploy classroom and benchmark assessments online or on paper. Give your educators the data-informed insight to identify opportunities for enrichment and remediation.

Data Management & Reporting

Bring multiple data sources into a single platform that puts data in the hands of those who need it. Dashboards give quick access to student results. Key Performance Indicators track progress toward your goals. Use your district's benchmarks to forecast performance on state tests!

Instructional Support

Online lesson planning tools match district templates and eliminate the need to carry home and submit paper lesson plans. Individual instruction calendars link to district curriculum. Materials banks allow for easy organization and review of approved instructional materials. Student grouping functionality supports differentiated instruction.

Curriculum Management

Gather, tag, organize, and load curricular materials into a centralized repository. Generate district-wide scope and sequence. Distribute and update all of it online to eliminate the need for costly and quickly outdated curriculum binders.

Student & Parent Access

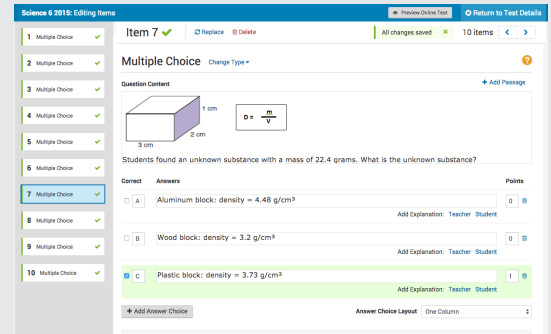
Parents, guardians, and students have secure, online access to their assignments and performance data, including student-generated individualized learning plans – all with the goal of increasing achievement by fostering involvement through easy access to data.

Student Profiles and Student Workspaces

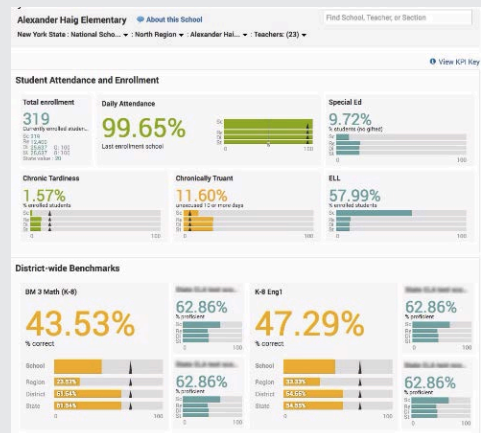
An online cumulative folder, the Student Profile captures up-to-date student traditional performance information and historical data (including course enrollment, assessment results, mastery information, attendance, discipline, course grades, and much more). The Student Workspace captures student performance and mastery in ways different from traditional assessments; students can load exemplar work (with captions) to demonstrate mastery or progress, and teachers can use the workspace for student assignment work, independent projects, and performance tasks, providing students with guidance and feedback in a collaborative environment.

TestNav for Online Test Delivery

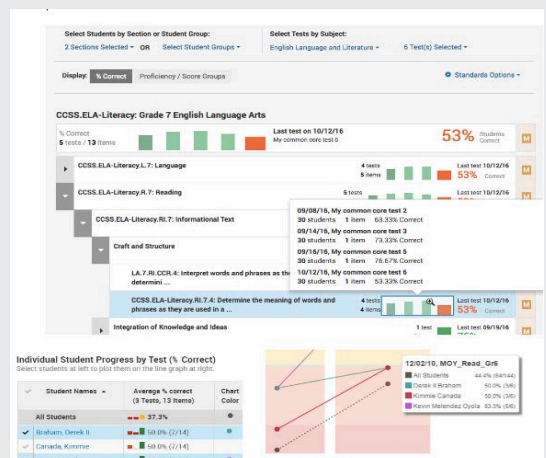
TestNav is our next-generation test delivery engine. We've integrated TestNav into Schoolnet to support students with the same full set of accommodations and rich features they experience on state summative assessments.



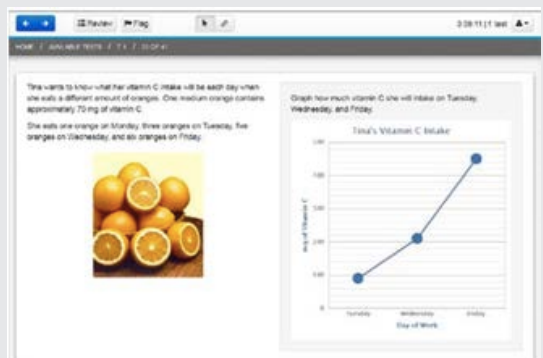
Formative Assessment



Dashboards and Key Performance Indicators (KPIs)



Standards Performance Dashboard



TestNav OnlineTest Delivery